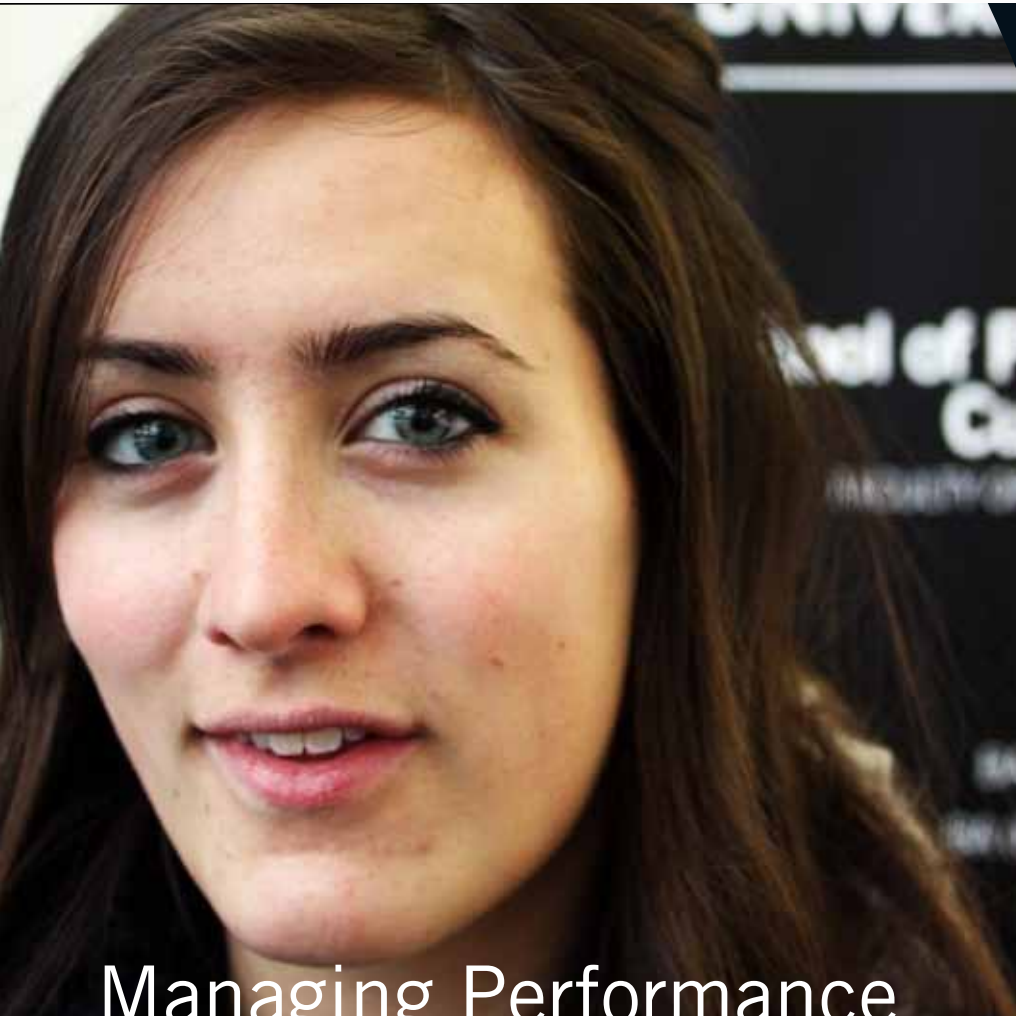




FOCUS

Spring 2010

News from the School of Performance and Cultural Industries



Managing Performance Students win Enterprise Award

Third year Managing Performance students, Rachael Boothman and Nathanya Laurent, were awarded an Enterprise Student Scholarship Award for their creative business ideas last month.

The Undergraduate Enterprise Programme provides a structured programme for entrepreneurial students to make their business ideas a reality. Rachael's award winning idea is a Social Networking site for people in Leeds who share similar interests in Music.

On the site users will be able to create their own profile and network with other users to arrange trips, travel and bookings. 'Because we don't have a big stadium or arena it's a good way of people getting together to go and see an artist they like in Manchester, Newcastle or London for example'

The website will also offer coach and ticket packages so people can travel safely and cheaply to and from venues as well as meeting people on the way.

Watch on www.youtube.com/user/PCILEeds

Student Survey - have your say
Page 3

Personal Tutoring and Leeds
for Life
Page 2

Theatre & Performance
students sleep rough!
Page 3

PCI Productions'
reviews
Page 4

What's on stage@leeds
Page 4

Staff News
Page 2

Student News
Page 3

Alumni News
Page 3

Year in Industry News
Page 3

SCHOOL NEWS

The staff of PCI have a very wide range of backgrounds and talents. This academic year marks an exciting new development in the life of the School : that of the international exchange of staff to enliven each institution.

In connection with work by staff from PCI in China, Professor Lu Ang, Head of Directing at the Shanghai Theatre Academy in China received a full scholarship from the Chinese government to research and teach at PCI from August to December 2009. The third year production of Romeo and Juliet which he co-directed with PCI lecturer Katie Beswick was an exciting piece of intercultural work. PCI and Shanghai Theatre Academy are now in the process of making a student exchange agreement and Jonathan Pitches, Peter Collis and I will be working with Shanghai students in the summer.

In semester two Professor Eckart Voigts-Virchow of Siegen University, Germany, will join us the School having been awarded a prestigious Leverhulme scholarship. Professor Voigts-Virchow will lecture, take seminars and generally contribute

to the the academic life of the School and University.

In April Professor Jonathan Pitches from PCI will spend time as a visiting Professor at the University of Malta, and Dr Anna Fenemore will be artist in residence and lecturer at the University of California Davis. In both cases we hope that in 2010-11 we shall have reciprocal visits from Maltese and American colleagues.

Susan Daniels Head of School

PERSONAL TUTORING IN PCI AND LEEDS FOR LIFE

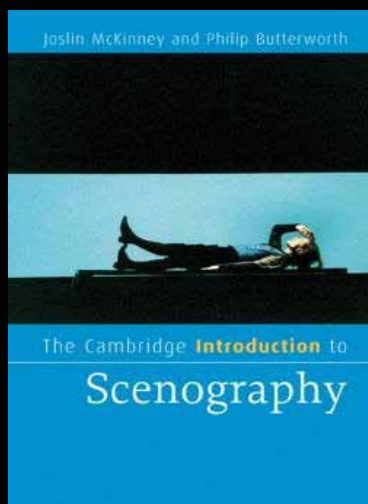
Leeds for Life is a web-based resource for all Leeds students. Its purpose is to ensure you have an exceptional and rewarding student experience and help prepare you for a successful future once you leave the University. New developments on the Leeds for Life site were introduced in September 2009 (with further enhancements in December). Students can now see the development opportunities available through their school and explore the range of co-curricular opportunities. These opportunities can help them develop or enhance specific skills and range from volunteering and study abroad to membership of societies.

The 'living cv' feature provides students with practical advice and information on how to develop their CV based on the opportunities they have saved from the Leeds for Life website. It is also a single point of access to the information they have recorded from personal tutoring sessions, exam marks across each year of study, their personal statement (the collection of reviews of each year) and it has the facility for each student to add links to other websites.



Leeds for Life Foundation grants to support ideas for projects or activities which are in the spirit of the Leeds for Life project and which fit into one of the following categories; personal development and benefiting others; travel abroad; development of a better understanding of Spanish-speaking countries and travel writing. The deadline for applications is Feb 16th 2010. Visit the website on www.leedsforlife.co.uk for further information.

'CAMBRIDGE INTRODUCTION TO SCENOGRAPHY' IS PUBLISHED



Dr Joslin McKinney, Lecturer in Scenography, and Dr Philip Butterworth, have co-authored the 'Cambridge Introduction to Scenography' - an important and much needed contribution in this area. For further details visit www.cambridge.org

LECTURER GARRY LYONS' ADAPTATION OF 'THE SECRET GARDEN'

Lecturer Garry Lyons adaptation of children's classic 'The Secret Garden' has been showing at the West Yorkshire Playhouse from November to January. Garry, an award- winning playwright, screenwriter and producer in theatre, television and radio recently won a Royal Television Society award for LEAH'S TRAILS.

NEW JOURNAL SUCCESS FOR TUTOR

Dr Philip Kiszley, Lecturer in Applied Theatre, will co-edit a new interdisciplinary publication, which is scheduled to begin in 2011. "We intend to call it 'Punk and Post-Punk'" The journal is ground breaking in that it deals with all aspects of arts culture and education touched by the ethos and aesthetic.

INCUBATOR MONITORING SCHEME

The School of Performance and Cultural Industries is delighted to announce that the following companies have been selected for the Incubator scheme between January 2010 and December 2010:

Pout Productions: Emma Jackson, Daniel Williamson, Craig Murray.

TaleGate Theatre: James Worthington and Kate Lindsey

Left at the Theatre: Rachel McCarter and Andrew Roberts

For more information please visit www.leeds.ac.uk/paci/incubator.html



STUDENT SURVEYS

WE VALUE YOUR COMMENTS...

The annual National Student Survey (NSS) will be open from Mon, Feb 8th 2010. The NSS is a census of students in their final year in HE institutions across the UK.

Level 3 students are asked to reflect on their experience and give feedback on a number of areas including; the quality of teaching; assessment and feedback, and their overall satisfaction. The data is available on the unistats website: (<http://www.unistats.com/>) so that prospective students and their advisors can use the results to help make informed choices of where and what to study.

It is also extremely valuable to the staff of PCI to help us in enhance the student experience. We want to encourage maximum participation from PCI students in the NSS and PES. (Programme experience Survey)

NSS and PES data comes directly back into PCI and is analysed by all PCI staff.

Details of survey results from 2008-9 together with the school's action plan for responding to them are posted on the Student/ staff Forum Area on the VLE (go to 'School Area' then 'Get Involved'). The NSS will be open for L3 undergraduates from Monday 8th February until Easter.



The PES for Level 1 and Level 2 undergraduates runs end April until mid June and for PGT from mid June until the 1st September.

For more information visit the Portal. www.leeds.ac.uk/portal

INDUSTRY YEAR

PCI undergraduate students can now opt to take an additional year in industry as part of their studies. We are building up a very exciting base of industry partners and we feel sure students will benefit from this.

Currently we have two students on Industry Year - Isabelle Drummond is working both in Cardiff (Dance House) and Bournemouth (South West Dance).

Natalie Smith is working at Dancexchange in Birmingham.

STUDY ABROAD

Students currently on Study Abroad, include Chloe Stewart (York University, Canada), Patrick Turpin (McMaster University, Canada) and Anna Griffin (Queensland University of Technology, Australia)

For more information on the Year in Industry and Study Abroad see the School Area of the VLE.

STUDENT NEWS

DANCE WORKSHOPS

BA Dance students took part in a Choreographic workshop with Tara Herbert of Dance United in January 2010. The workshop explored how Tara created artistic work with young offenders through Dance United's specific approach to dance.

STUDENTS SLEEP ROUGH!

Six 3rd year Theatre & Performance students slept 'rough' as part of the Theatre & Performance module to raise money for St. George's crypt homeless shelter. The students did a 'Sponsored Sleep' outside the union to raise awareness amongst students. One of the students, Aislinn O'Brien, said 'the main objective is to gain an understanding of the experiences homeless people face living on the streets'

THE BIG BUILD

'The Big Build', an event organised by 3rd yr Enterprise Project students, took place on January 27th. This consisted of teams of 10, creating model playgrounds out of recycled materials. The Big Build is an exciting new opportunity at raising awareness of EAP (East African Playgrounds). EAP is a UK based charity which sends out teams of volunteers from the UK to build playgrounds for organisations in East Africa, such as schools, orphanages and charities.

IMPACT THEATRE GROUP

Other Enterprise Project students have formed 'Impact Theatre', a group that works with schools in addressing road safety issues. On February 24th the group are staging an event in stage@leeds, "Drive:Alive", in conjunction with West Yorkshire Fire Service and local schools.

ALUMNI NEWS

MA Student Sophie Nesworthy is now working for the marketing team with Camberwell, a consultancy organisation specialising in social and community enterprise. Recently promoted to Research consultant, her job primarily involves carrying out market research and analysing potential social business opportunities, 'I enjoy helping community businesses develop their ideas from an initial concept and meeting a wide variety of people involved in organisations'



REVIEWS

WHO KILLED ROMEO & JULIET?



A contemporary working of Shakespeare's most celebrated text. Directed by Professor Lu Ang, award winning director from the Shanghai Theatre Academy, this cross cultural collaboration was seeking to discover how the two, very distinct forms, of Eastern and Western theatre could work together. 24 students from the School of PCI worked as an ensemble, drawing on contemporary theatre practices to elevate Shakespeare's timeless classic. The neutral design concept created an interesting theatre space within which the play could be 'created'.

The focal characters were given free reign of the space whilst the rest of the ensemble could sit either side when they were not performing. Within this design the actors became stripped of their identity, reinforcing the idea of multi-rolling within the play. Movement and dance were interlinked throughout the piece drawing on traditional Chinese methods of theatre and subsequently helping to highlight the key theme of control. This production is a fascinating example of a successful cross-cultural collaboration. The strong cast were able to demonstrate why intercultural unions in theatre are so fascinating, exciting and challenging.

In essence, theatre is as much the study of culture, as it is the study of people.

Review by Kate Philips 3rd year BA Theatre and Performance.
Photo (c) Matt Gray Photography

SOMETHING GERMAN!

November 9th saw the twentieth anniversary of the collapse of the Berlin Wall. Gesamtkunstwerksverfremdungseffekt (Something German), a final year collaboration between students on Performance Design, Managing Performance, Dance and Theatre & Performance offers an insightful and creative look at the history of Germany through the personal experiences of those who lived within the confines of the wall. This production truly succeeds in presenting the prevailing sense of separation and uncertainty which clouded the aftermath of the wall's collapse, and perhaps even life in Berlin today.

What I especially enjoyed about this production was its constantly shifting tone from real humour, particularly generated in the entertaining moments of audience interaction, to a serious and thought-provoking contemplation. Despite the continually changing sense of time, mood and setting, the performance remained fluid. This is owed to the excellent set design and use of photography.



The use of space was incredibly effective, allowing for exciting experimentations in movement which feature throughout.

Moreover, the writing done by members of the cast was brimming with wit and animation, something that is well worth commending.

Despite this, there is a definite structural imbalance between the two acts which makes the ending seem slightly abrupt. At times the level of historical information thrown at the audience can be overwhelming, with the temptation that it could feel like a history lesson. I certainly came out knowing a lot more about the Berlin Wall. However, the competent performances of this extremely professional and talented cast augmented the undeniable creativity and originality of the play.

Review by 'Leeds student' newspaper
Photo (c) Malcolm Johnson

WHAT'S ON STAGE@LEEDS

FEBRUARY

- 3-6 A Midsummer Night's Dream: Tom Large
- 10-13 Henry IV Part 2
LUU Theatre Group
- 18 Ruby's Last Confession
Ruby Corset
- 19 The Twice Removed
Anna Fenemore
- 25-27 Phaedra's Love
Ravenrock

MARCH

- 4-6 New Stages Festival
- 11-13 The Vagina Monologues
PCI Society
- 17-20 Magic & Impossibility
- 29 Create sound
- 30 Create Movement
- 31 Create Drama

APRIL

- 28-30 Dream play

MAY

- 1st Dream play
- 6-8 The Wedding Singer
LUU Theatre Group
- 12-15 The Wife of Heracles
- 21 Slanjyavah danza

For more information on these listings please visit the stage@leeds website www.stage.leeds.ac.uk